

# Delsys Software Update Tool

## User's Guide

Copyright © 2018 by Delsys Incorporated  
Delsys Logo, and EMGworks are  
Registered Trademarks of Delsys Incorporated.

MAN-029-1-1

## Table of Contents

|     |  |   |
|-----|--|---|
| 1   | Important Information.....                       | 2 |
| 1.1 | Intended Use.....                                | 2 |
| 1.2 | Technical Service and Support.....               | 2 |
| 1.3 | Device Information .....                         | 2 |
| 1.4 | System Requirements .....                        | 2 |
| 2   | Delsys Software Update Tool Overview.....        | 3 |
| 3   | Installing the Delsys Software Update Tool ..... | 3 |
| 4   | Using the Delsys Software Update Tool.....       | 3 |
| 4.1 | EMGworks.....                                    | 3 |
| 4.2 | Trigno Base Station .....                        | 4 |
| 4.3 | Trigno Sensors.....                              | 4 |
| 4.4 | Update Summary .....                             | 6 |

# 1 Important Information

## 1.1 Intended Use

The Delsys Software Update Tool is a support software package to be used in conjunction with the Trigno Wireless EMG biofeedback system. The tool is designed for the sole purpose of updating the firmware and software related to the Trigno Wireless EMG system.

## 1.2 Technical Service and Support

For information and assistance visit our web site at:

[www.delsys.com](http://www.delsys.com)

Contact us at:

E-mail: [support@delsys.com](mailto:support@delsys.com)

Telephone: (508) 545 8200

## 1.3 Device Information

Please see the Trigno Wireless EMG System User Guide for information on the EMG Device.

## 1.4 System Requirements

Trigno Wireless EMG System

Windows 7 or newer, 64-bit or 32-bit operating systems supported

One USB 2.0 port

2.0 GHz processor clock speed (minimum)

2 GB system memory (minimum)

1 GB hard disk storage (minimum)

## 2 Delsys Software Update Tool Overview

The Delsys Software Update Tool is a software application designed to allow customers to perform firmware updates to their Trigno Devices from their own lab, as well as update the software running on the PC.

## 3 Installing the Delsys Software Update Tool




The Delsys Software Update Tool installer is available from [delsys.com](http://delsys.com). Please visit our website or contact our support team for further assistance locating the tool's installer.

After download, launch the installer. When prompted, click "Install." The Delsys Software Update Tool will now install on your computer. For future updates, you will not have to download the tool again; you will simply be able to open up the tool to see if your system requires updates. The application will automatically run after the installation completes.

## 4 Using the Delsys Software Update Tool

### 4.1 EMGworks



When the Delsys Software Update Tool is launched, it will query the PC to determine the currently installed version of EMGworks. If a new version is available (or EMGworks is not installed), the application will display an alert icon. If this is the case, please visit [delsys.com](http://delsys.com) to download the latest version.

|                                     |   |                         |                           |
|-------------------------------------|---|-------------------------|---------------------------|
| <b>EMGworks</b>                     |  | Installed version 4.2.0 | <a href="#">Update...</a> |
| <i>1: EMGworks is out of date</i>   |   |                         |                           |
| <b>EMGworks</b>                     |  | Not installed.          | <a href="#">Update...</a> |
| <i>2: EMGworks is not installed</i> |   |                         |                           |
| <b>EMGworks</b>                     |  | Installed version 4.3.0 |                           |
| <i>3: EMGworks is up to date</i>    |   |                         |                           |

In addition to the version information, if EMGworks is installed and activated, the activation key is displayed at the bottom of the application.

## 4.2 Trigno Base Station

Make sure your Base Station is connected and powered on. Once connected, launch the Software Update Tool. After querying the base, the current version of the firmware will be displayed. If a new firmware version is available, the application will display an alert icon and present an option to update the base firmware.


|  |   |   |                           |
|--|---|---|---------------------------|
| <b>Trigno Base Station</b>                   |  | BID-206<br>Firmware: MA2719-BE1400-DS0612-US1804-DA0801   | <a href="#">Update...</a> |
| <i>4: Trigno Base Firmware is out date</i>   |   |   |                           |
| <b>Trigno Base Station</b>                   |  | Serial: SP-W02-1113 (BID-206)<br>Manufacture date: Tuesday, December 13, 2016<br>Firmware: MA2902-BE1500-DS0801-US2001-DA0900 |                           |
| <i>5: Trigno Base Firmware is up to date</i> |   |   |                           |

Note: the Serial Number, BID, and Firmware versions depicted are representations of these values and will not match with what will be depicted when the Delsys Software Update tool is in use.

While updating the base – do not close the application, disconnect the base, or remove base power.

## 4.3 Trigno Sensors

Each individual sensor must be paired to determine if a firmware update is necessary. Click the pair sensor button to begin a check.

**Trigno Sensors**  Ready to pair. Pair Sensor...




6: Click the "Pair Sensor" button to begin

**Waiting for sensor**

- 1 Remove the sensor from the charging station and press the sensor button to power it on.
- 2 Press and hold the sensor button until this message disappears.

7: Waiting for user to pair sensor

After pairing, the sensor firmware version and type will be displayed, along with the serial number. If a new firmware version is available, an alert icon will be displayed and option to update will be presented. Click the Update link to perform an update. When selected, the update process will request another pair operation be performed. Since the update is performed wirelessly, a clear path between the sensor and the base station antenna is required for the entirety of the update.

|   |   |   |
|---|---|---|
| <b>Trigno Sensors</b>   |  SID-14989 Firmware 22-18 Type D<br>Update required. | <input type="button" value="Pair Sensor..."/> <a href="#">Update...</a> |
| <i>8: Message indicating firmware update is available</i>   |   |   |
| <div style="border: 1px solid blue; padding: 10px;"> <p><b>Waiting for sensor</b></p> <ol style="list-style-type: none"> <li>1 Remove the sensor from the charging station and press the sensor button to power it on.</li> <li>2 Press and hold the sensor button until this message disappears.</li> </ol> </div> |   |   |
| <i>9: Waiting for pair to initiate the update</i>   |   |   |
| <div style="background-color: #e0e0e0; padding: 5px; display: flex; align-items: center;">  <b>Sensor update complete.</b> </div>  |   |   |
| <i>10: Update successful</i>  |   |   |
| <b>Trigno Sensors</b>   |  SID-14989 Firmware 30-08 Type D                   | <input type="button" value="Pair Sensor..."/>                           |
| <i>11: New Firmware version displayed</i>   |   |   |

Note: the SID and Firmware Versions depicted are representations of these values and will not match with what will be depicted when the Delsys Software Update tool is in use.

Repeat this operation for all sensors.

After firmware updates, sensors will need to be re-paired to the base. Use the Trigno Control Utility to perform these operations.

#### 4.4 Update Summary

After updates are performed, a link near the top of the application will provide a summary of the updates performed during this session.

## 5 Downgrading System Components

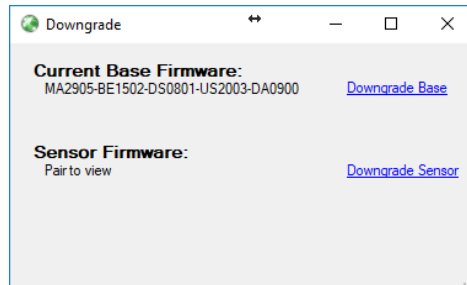
The Software Update Tool also allows downgrading of the Trigno Base Station and Trigno Sensors. Click the “Need to downgrade?” link label to open the downgrade dialog:



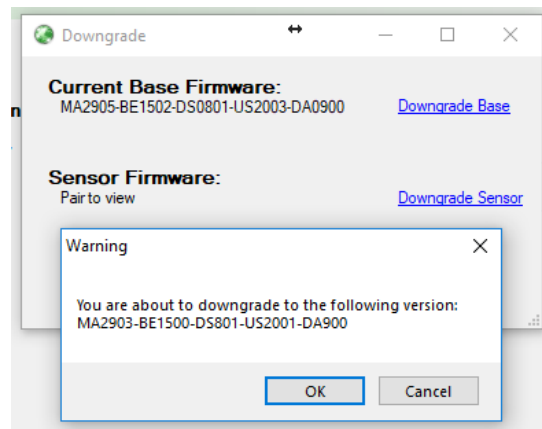
12: Software Update Tool with Downgrade link label

### 5.1 Downgrading the Trigno Base Station

Click the “Downgrade Base” link label to initiate a downgrade of the base station firmware. A prompt will appear asking to confirm the downgrade process, and will indicate the version of Base Station firmware that the base will be downgraded to.



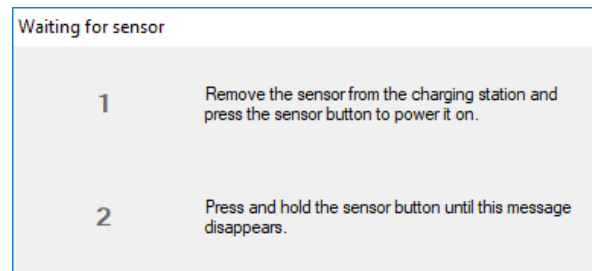
13: Downgrade dialog



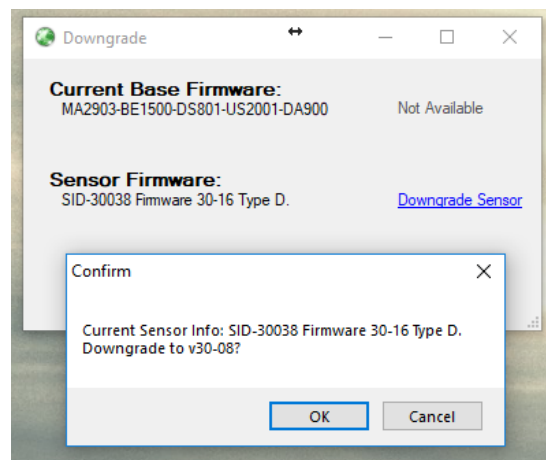
14: Base Downgrade confirmation prompt

## 5.2 Downgrading Trigno Sensors

Click the “Downgrade Sensor” link label to initiate a sensor downgrade. Follow the instructions on the subsequent prompt to initiate a sensor pair and downgrade operation. After determining if a downgrade is available, a prompt will appear to confirm the operation.



15: Sensor pair prompt



16: Sensor Downgrade confirmation prompt